



PharmaGuide course PG200

How the Drug Discovery Industry Works - for translators

A one day course that covers the discovery and development of medicines as well as explaining the jargon used in this process. This will help translators who deal with some of the massive amounts of documentation required for the regulatory approval and marketing of drugs; even those with a scientific background may have some difficulty in keeping up with this highly complex area without some guidance. Attendees are given a clear understanding of the concepts that cover the discovery of drugs in the laboratory and their development into commercial products via clinical trials. The session is concluded with a question and answer session to discuss items of specific interest to individual delegates. This part has been shown to be particularly useful for identifying websites and other resources of use to the freelance translator covering the life sciences. In addition to the course itself, delegates are provided with copies of all slides in a course manual as well as a glossary of terms and other useful resources.

Location

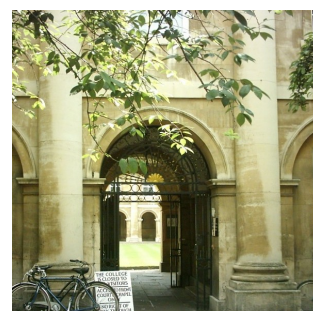
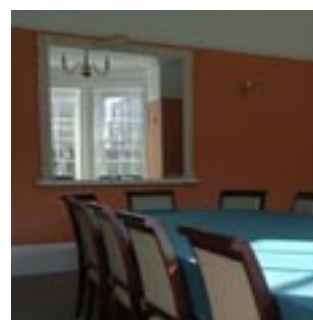
The course is held in Emmanuel College, Cambridge. The College was founded in 1584, with John Harvard (of American University fame) one of its former members. The beautiful grounds are enhanced by the Wren Chapel and the famous Emmanuel ducks. The College is in the heart of Cambridge and is easily accessible by road and rail. For details see <http://www.emma.cam.ac.uk/contacts/directions/>.

Dates

16th June 2012

Cost

This is offered at a special freelancer's rate of £130 (inclusive of VAT)



Terms and conditions

Bookings may be made directly by telephone, fax or e-mail.

Payment is required before the course commences and will be invoiced at the time of booking.

Cancellations should be made in writing and will be charged at 50% of booking fee if received more than 2 weeks prior to the course, or 100% of fees if less than 2 weeks. Substitutions will naturally incur no penalty.

PharmaGuide Ltd reserves the right to postpone a course or to change location. In the case of the former, existing bookings will be transferred to the nearest convenient date.

To book a place or to enquire about in-house courses please contact PharmaGuide Ltd
ed.zanders@pharmaguide.co.uk or phone 01223 207378, fax 01223 208534
www.pharmaguide.co.uk