



PharmaGuide course PG300 Chemistry for translators

A one day course that provides a background to chemistry for those who have no specific training in this subject, but who encounter it in their translation work.

The course begins with some basic definitions of the main branches of chemistry and a brief historical overview. This is followed by a review of what chemistry in the laboratory actually involves. The second part is devoted to the practice of chemical translation, covering nomenclature as well as worked examples of patents and other written material. As with PharmaGuide's other courses for translators and interpreters, PG300 does not focus on any specific language (other than English); some comment is made however on chemical nomenclature in other European languages.

In addition to the course itself, delegates are provided with copies of all slides in a course manual as well as a glossary of terms and other useful resources.

Location

The course is held at Emmanuel College, Cambridge. The College was founded in 1584, with John Harvard (of American University fame) one of its former members. The beautiful grounds are enhanced by the Wren Chapel and the famous Emmanuel ducks. The College is in the heart of Cambridge and is easily accessible by road and rail. For details see <http://www.emma.cam.ac.uk/contacts/directions/>.

Date

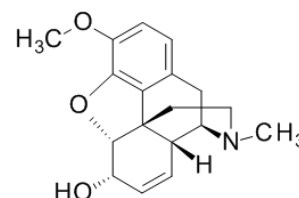
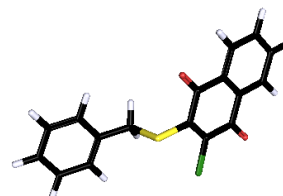
To be announced, late 2012

Cost

This is offered at a special freelancer's rate of £130 (inclusive of VAT)

Discounts

This course is offered together with PG400 Biotechnology for Translators at a combined price of £220 (inclusive of VAT)



Terms and conditions

Bookings may be made directly by telephone, fax or e-mail.

Payment is required before the course commences and will be invoiced at the time of booking.

Cancellations should be made in writing and will be charged at 50% of booking fee if received more than 2 weeks prior to the course, or 100% of fees if less than 2 weeks. Substitutions will naturally incur no penalty.

PharmaGuide Ltd reserves the right to postpone a course or to change location. In the case of the former, existing bookings will be transferred to the nearest convenient date.

To book a place or to enquire about in-house courses please contact PharmaGuide Ltd
ed.zanders@pharmaguide.co.uk or phone 01223 207378, fax 01223 208534
www.pharmaguide.co.uk